

[View this email in your browser](#)

Inside **VIEW**

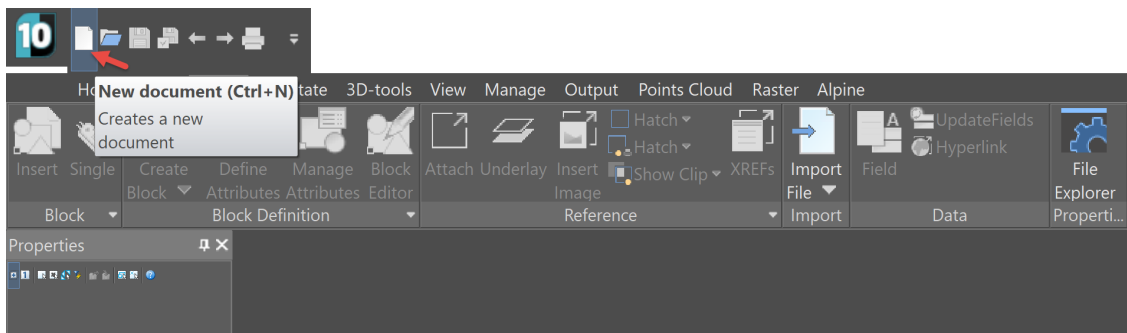
March 2021



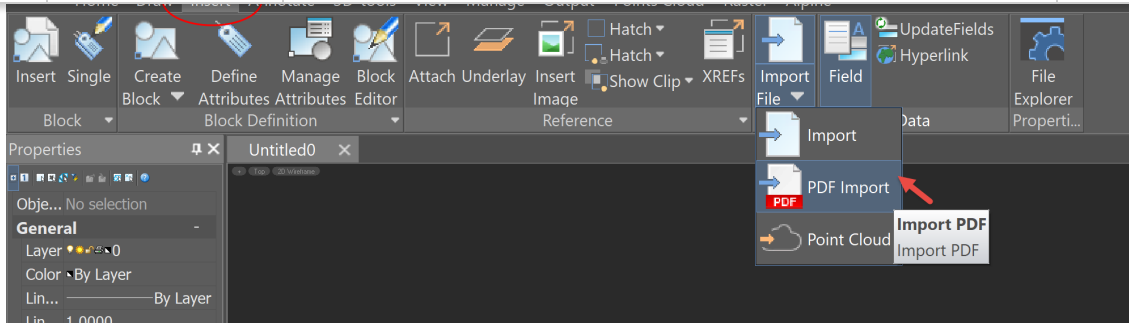
Converting a PDF to DWG in NanoCAD 10

Alpine's complementary CAD plugin, NanoCAD, was developed to make the production process easier. A new feature added in NanoCAD 10.0 is the ability to convert a PDF document to a DWG drawing file. This drawing file can be imported into IntelliVIEW to allow for easy viewing and tracing.

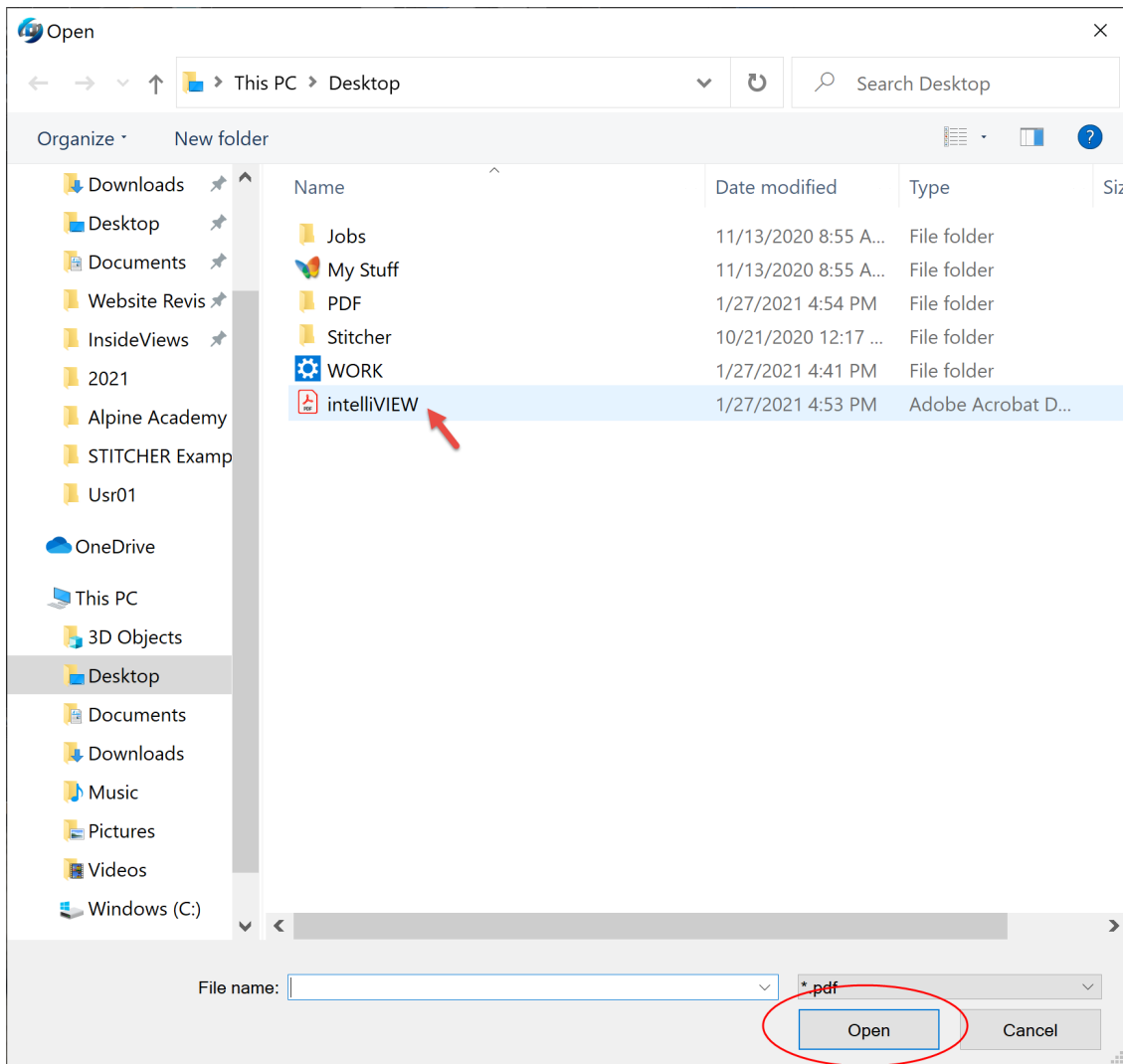
Open NanoCAD 10.0 and open a New document. The NanoCAD tools will then be available for selection.



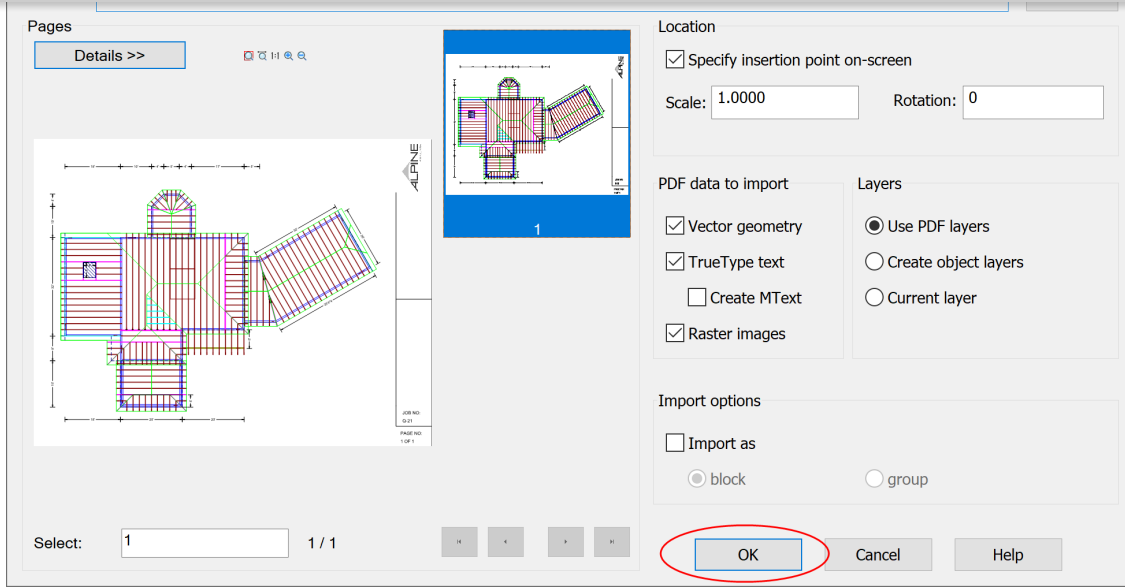
Click the Insert tab on top of the ribbon toolbar, and click the drop down to Import File. Select the icon for PDF Import.



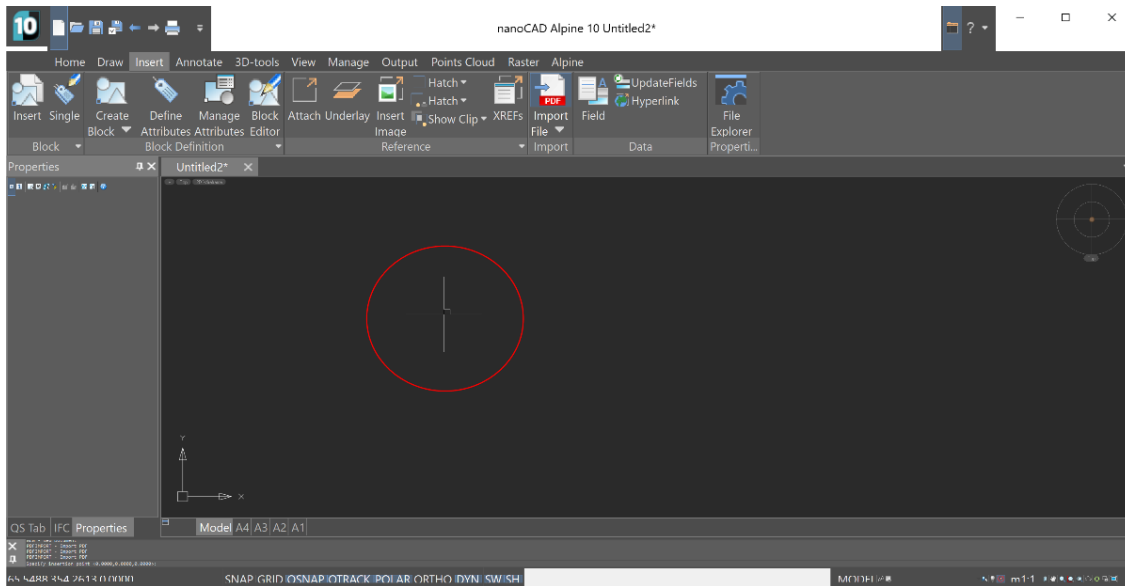
The system opens the Open file dialog box. Browse and select the PDF to be converted.

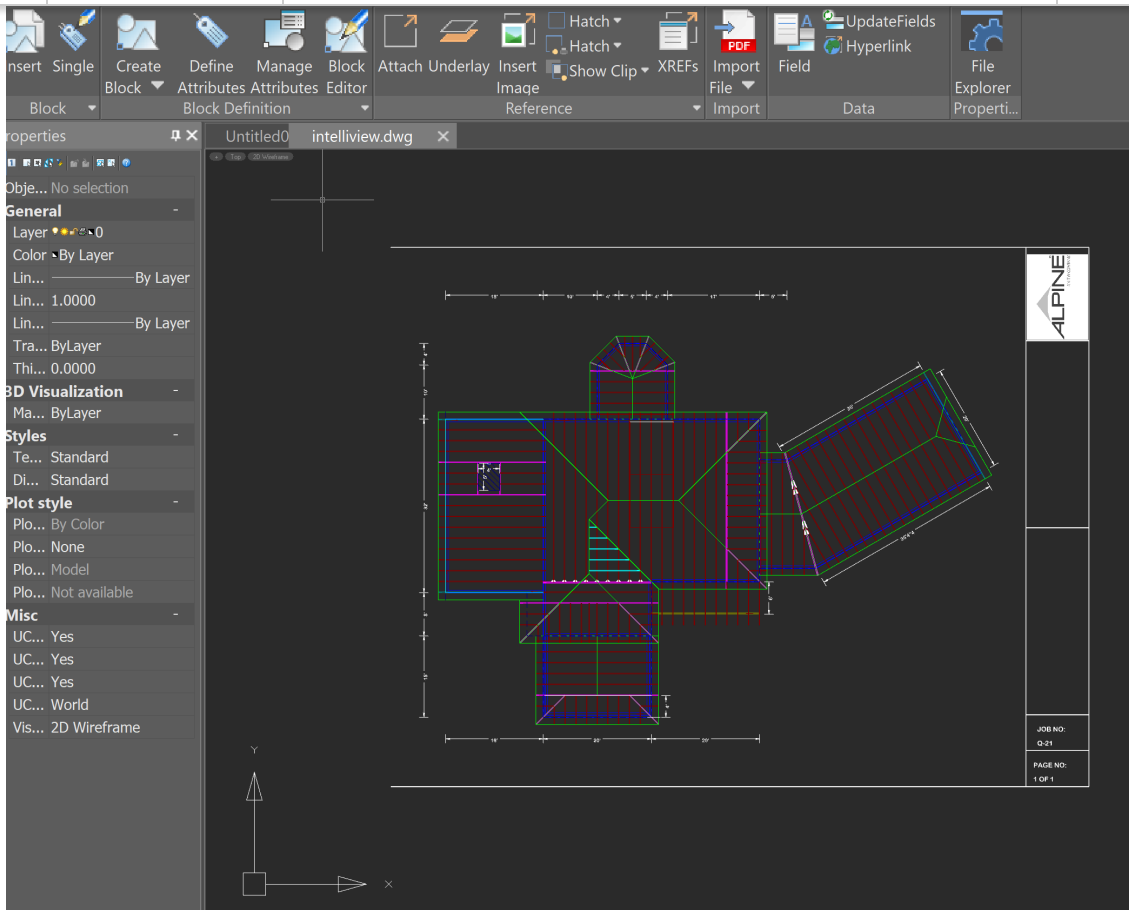


The Import PDF dialog box will open to confirm your options. Click OK at the bottom.

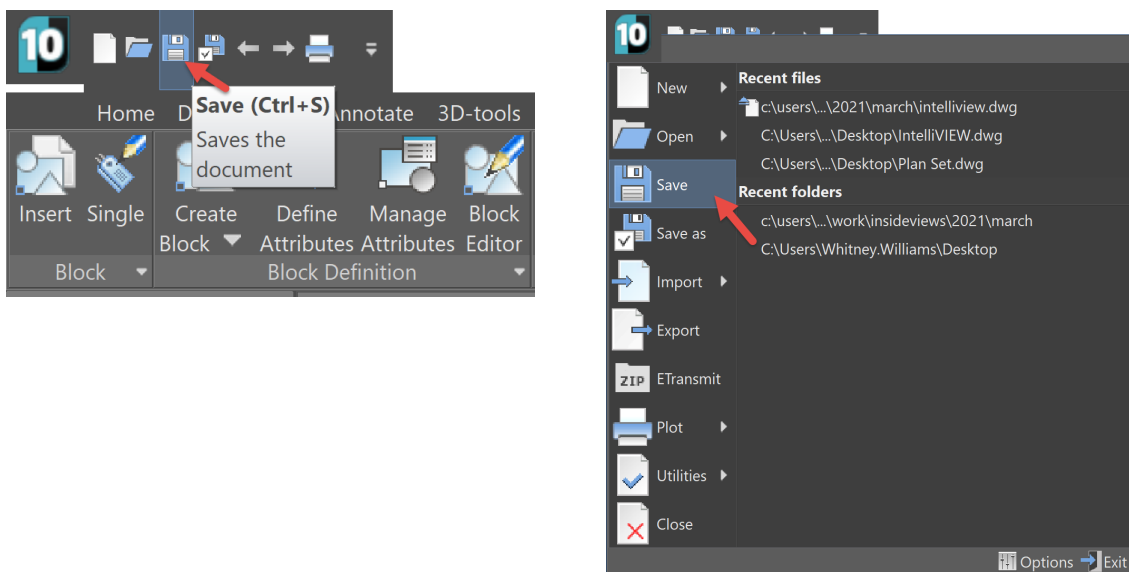


The system returns to the NanoCAD document page, and a cross hatch cursor is visible on the screen. Click on the document page with the cursor to add your PDF document. You will see the progress bar at the bottom converting the image.





Save your document by clicking the Save icon in the quick tools or by clicking the NanoCAD 10 icon in the top left and selecting Save.



The drawing should be scaled in iModel upon upload prior to use.

[Subscribe](#)

[Past Issues](#)

[Translate](#) ▼

please email us at training@alpineitw.com. For technical assistance,
please call the Alpine Help Desk at [\(866\) 237-2878](tel:(866)237-2878).



[Alpine, an ITW Company](#) | (800) 521-9790 | 155 Harlem Avenue, North Building, 4th Floor,
Glenview, IL 60025

[Update Mailing Preferences](#) [Unsubscribe](#)